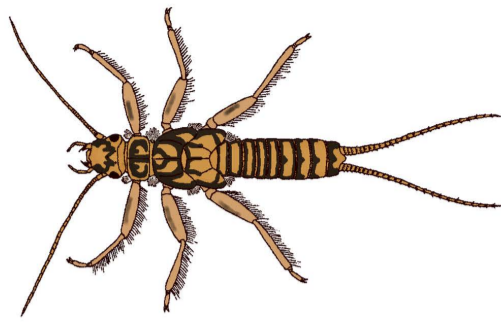


# LES INVERTÉBRÉS AQUATIQUES

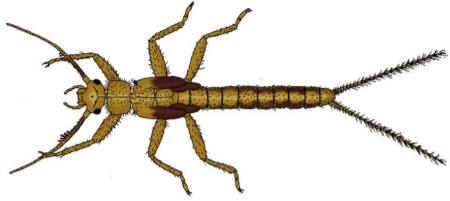
Les plus  
polluo-sensibles



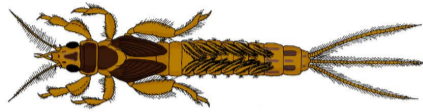
*Perlidae* (PERLE)  
Larve de plécoptère



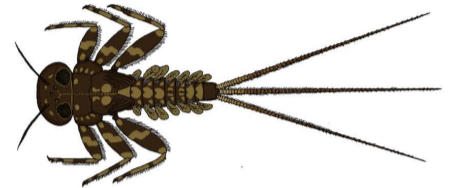
*Odontoceridae*  
Larve de trichoptère



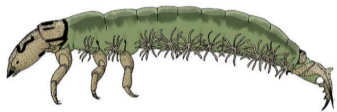
*Leuctridae*  
Larve de plécoptère



*Ephemeridae*  
Larve d'éphémère



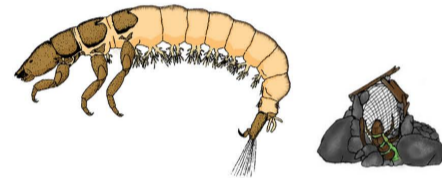
*Heptageniidae*  
Larve d'éphémère



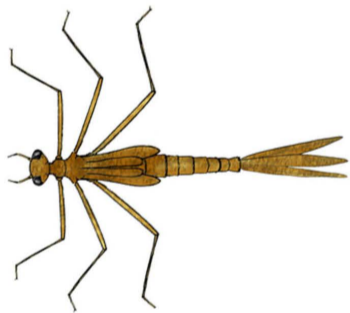
*Rhyacophilidae*  
Larve de trichoptère



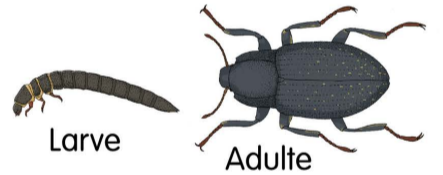
*Limnephilidae*  
Larve de trichoptère



*Hydropsychidae* et son filet  
Larve de trichoptère



*Calopterygidae*  
(DEMOISELLE)  
Larve d'odonate



*Elmidae*  
Coléoptère



*Ancyliidae*  
Gastéropode



*Corbiculidae*  
Bivalve



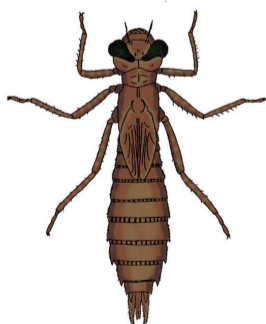
*Hydrobiidae*  
Gastéropode



*Gammaridae* (GAMMARE)  
Crustacé



*Cordulegastridae*  
(LIBELLULE)  
Larve d'odonate



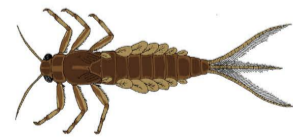
*Aeshnidae*  
Larve d'odonate



*Dugesiidae*  
Triclade  
(PLANAIRE)



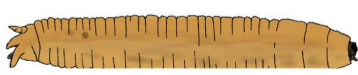
*Simuliidae* (SIMULIE)  
Larve de diptère



*Baetidae*  
Larve d'éphémère



*Nepidae*  
(NÈPE)  
Hétéroptère



*Tipulidae* (COUSIN)  
Larve de diptère



*Lumbricidae*  
Vers



*Glossiphoniidae*  
Sangsue



*Asellidae*  
(ASELLE)  
Crustacé

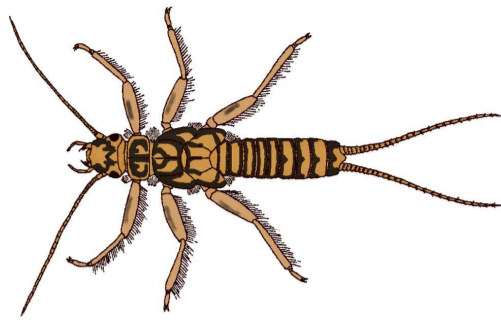


*Chironomidae*  
Larve de diptère

Les plus  
polluo-résistants

# LES INVERTÉBRÉS AQUATIQUES

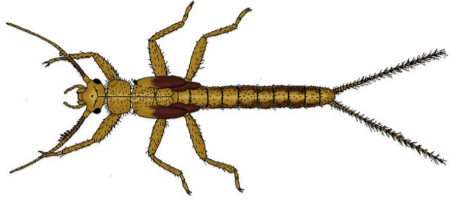
Les plus  
polluo-sensibles



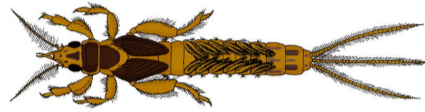
*Perlidae* (PERLE)  
Larve de pléoptère



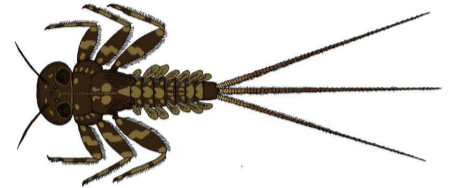
*Odontoceridae*  
Larve de trichoptère



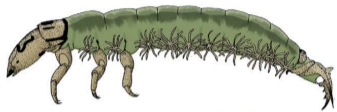
*Leuctridae*  
Larve de pléoptère



*Ephemeridae*  
Larve d'éphémère



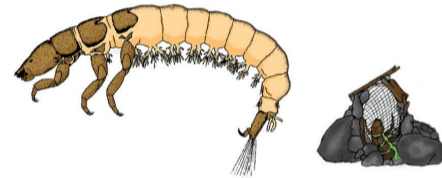
*Heptageniidae*  
Larve d'éphémère



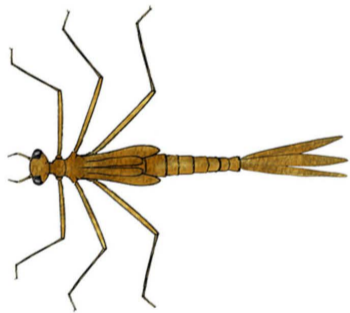
*Rhyacophilidae*  
Larve de trichoptère



*Limnephilidae*  
Larve de trichoptère



*Hydropsychidae* et son filet  
Larve de trichoptère



*Calopterygidae*  
(DEMOISELLE)  
Larve d'odonate



*Elmidae*  
Coléoptère



*Ancyliidae*  
Gastéropode  
(Mollusque)



*Corbiculidae*  
Bivalve  
(Mollusque)



*Hydrobiidae*  
Gastéropode  
(Mollusque)



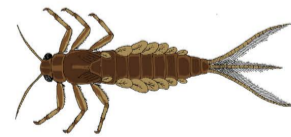
*Gammaridae* (GAMMARE)  
Crustacé



*Dugesiidae*  
Triclade  
(PLANAIRE)



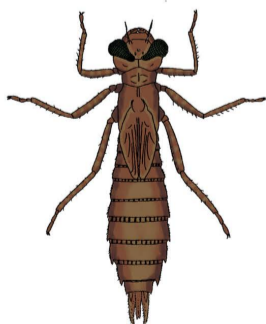
*Simuliidae* (SIMULIE)  
Larve de diptère



*Baetidae*  
Larve d'éphémère



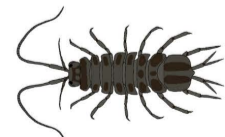
*Cordulegastridae* *Aeshnidae*  
(LIBELLULE)  
Larve d'odonate



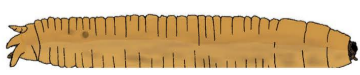
*Lumbricidae*  
Vers



*Glossiphoniidae* *Piscicolidae*  
Sangue



*Asellidae* (ASELLE)  
Crustacé



*Tipulidae* (COUSIN)  
Larve de diptère



*Chironomidae*  
Larve de diptère



*Nepidae*  
(NÈPE)  
Hétéroptère

Les plus  
polluo-résistants